

Series 2 manually operated console minivalves

3/2 NC, NO
Ports M5, Cartridge Ø 4



This series of miniature valves has been especially designed to satisfy all the application requirements of the controls industry with particular attention paid to the operating characteristics required from these components:

- short operational stroke
- small dimensions

GENERAL DATA

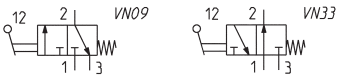
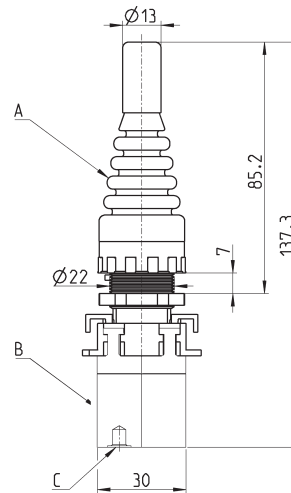
| | |
|----------------------------|--|
| Construction | poppet-type (closed centres) |
| Valve group | 3/2 NC, NO 5/2 and 5/3 CO |
| Materials | aluminium body, brass plunger, NBR seals |
| Mounting | panel |
| Ports | M5 or cartridge dia. 4 |
| Ambient temperature | 0°C + 60°C |
| Medium temperature | 0°C + 50°C |
| Operating pressure | see models |

CODING EXAMPLE

| | | | | | |
|-----------|--|----------|----------|-----------|----------|
| 2 | 3 | 4 | - | 97 | 5 |
| 2 | SERIES | | | | |
| 3 | FUNCTION: 3 = 3/2-way NC 4 = 3/2-way NO 8 = 5/3-way CO (function realized with 2x 3/2-way NC valves) | | | | |
| 4 | PORTS: 4 = cartridge \varnothing 4 5 = M5 | | | | |
| 97 | MODE OF OPERATION: 87 = 3 position selector 89 = push button 97 = palm switch 90 = joystick 99 = 2 position selector 92 = pedal 904 = key | | | | |
| 5 | RESETTING: 5 = spring return 0 = stable 2 = latching-twist to release 54 = joystick | | | | |

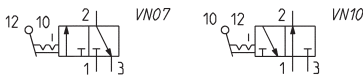
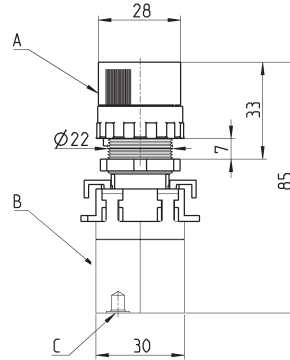
SERIES 2 MANUALLY OPERATED CONSOLE MINIVALVES

Minivalves Mod. 23..-905, 24..-905



| Mod. | Operating pressure (bar) | Flow (NL/min) | A | B | C (Supply/port) | Symbols |
|---------|--------------------------|---------------|---------|---------|-------------------|---------|
| 234-905 | 2 ÷ 8 | 60 | 200-905 | 234-000 | \varnothing 4/2 | VN09 |
| 235-905 | 2 ÷ 8 | 60 | 200-905 | 235-000 | M5 | VN09 |
| 244-905 | 2 ÷ 8 | 60 | 200-905 | 244-000 | \varnothing 4/2 | VN33 |
| 245-905 | 2 ÷ 8 | 60 | 200-905 | 245-000 | M5 | VN33 |

Minivalves Mod. 23...-990, 24...-990

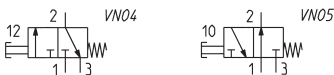
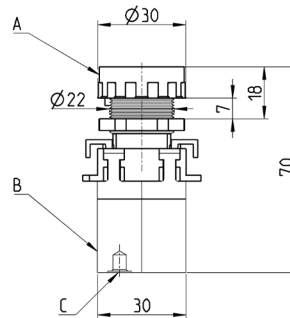


| Mod. | Operating pressure (bar) | Flow (NL/min) | A | B | C (Supply/port) | Symbols |
|---------|--------------------------|---------------|---------|---------|-----------------|---------|
| 234-990 | 2 ÷ 8 | 60 | 200-990 | 234-000 | Ø4/2 | VN07 |
| 235-990 | 2 ÷ 8 | 60 | 200-990 | 235-000 | M5 | VN07 |
| 244-990 | 2 ÷ 8 | 60 | 200-990 | 244-000 | Ø4/2 | VN10 |
| 245-990 | 2 ÷ 8 | 60 | 200-990 | 245-000 | M5 | VN10 |

Minivalves Mod. 23...-895, 24...-895

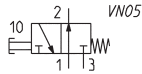
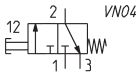
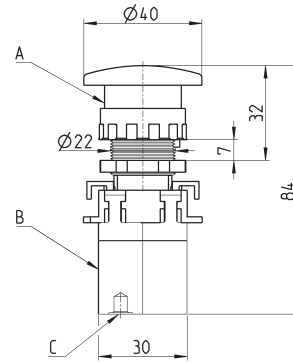


The packaging of the button includes 3 interchangeable disks in the colours red, black and green.



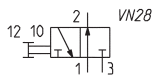
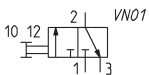
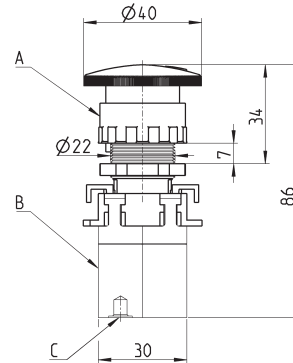
| Mod. | Operating pressure (bar) | Flow (NL/min) | Actuating force at 6 bar (N) | A | B | C (Supply/port) | Symbols |
|---------|--------------------------|---------------|------------------------------|---------|---------|-----------------|---------|
| 234-895 | 2 ÷ 8 | 60 | 7 | 200-895 | 234-000 | Ø4/2 | VN04 |
| 235-895 | 2 ÷ 8 | 60 | 7 | 200-895 | 235-000 | M5 | VN04 |
| 244-895 | 2 ÷ 8 | 60 | 7 | 200-895 | 244-000 | Ø4/2 | VN05 |
| 245-895 | 2 ÷ 8 | 60 | 7 | 200-895 | 245-000 | M5 | VN05 |

Minivalves Mod. 23...-975, 24...-975



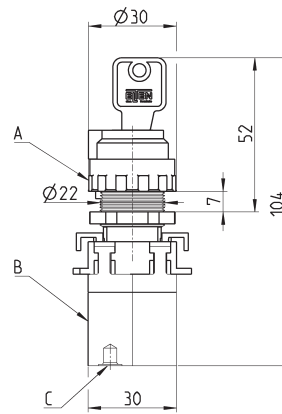
| Mod. | Operating pressure (bar) | Flow (NL/min) | Actuating force at 6 bar (N) | A | B | C (Supply/port) | Symbols |
|---------|--------------------------|---------------|------------------------------|---------|---------|-----------------|---------|
| 234-975 | 2 ÷ 8 | 60 | 7 | 200-975 | 234-000 | Ø4/2 | VN04 |
| 235-975 | 2 ÷ 8 | 60 | 7 | 200-975 | 235-000 | M5 | VN04 |
| 244-975 | 2 ÷ 8 | 60 | 7 | 200-975 | 244-000 | Ø4/2 | VN05 |
| 245-975 | 2 ÷ 8 | 60 | 7 | 200-975 | 245-000 | M5 | VN05 |

Minivalves Mod. 23...-972, 24...-972



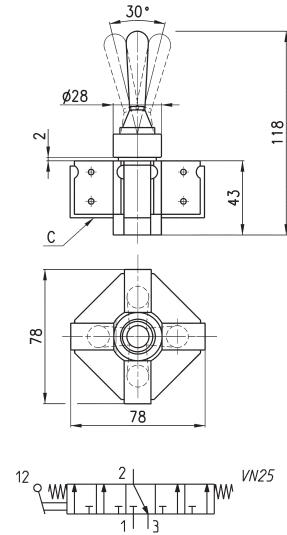
| Mod. | Operating pressure (bar) | Flow (NL/min) | Actuating force at 6 bar (N) | A | B | C (Supply/port) | Symbols |
|---------|--------------------------|---------------|------------------------------|---------|---------|-----------------|---------|
| 234-972 | 2 ÷ 8 | 60 | 7 | 200-972 | 234-000 | Ø4/2 | VN01 |
| 235-972 | 2 ÷ 8 | 60 | 7 | 200-972 | 235-000 | M5 | VN01 |
| 244-972 | 2 ÷ 8 | 60 | 7 | 200-972 | 244-000 | Ø4/2 | VN28 |
| 245-972 | 2 ÷ 8 | 60 | 7 | 200-972 | 245-000 | M5 | VN28 |

Minivalves Mod. 23...-904, 24...-904



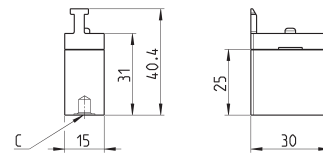
| Mod. | Operating pressure (bar) | Flow (NL/min) | A | B | C (Supply/port) | Symbols |
|---------|--------------------------|---------------|---------|---------|-----------------|---------|
| 234-904 | 2 ÷ 8 | 60 | 200-904 | 234-000 | Ø4/2 | VN02 |
| 235-904 | 2 ÷ 8 | 60 | 200-904 | 235-000 | M5 | VN02 |
| 244-904 | 2 ÷ 8 | 60 | 200-904 | 244-000 | Ø4/2 | VN31 |
| 245-904 | 2 ÷ 8 | 60 | 200-904 | 245-000 | M5 | VN31 |

Joystick valves Mod. 234-9054, 235-9054

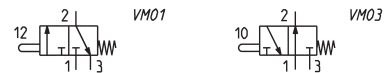


| Mod. | Minimum pressure (bar) |
|----------|------------------------|
| 234-9054 | 2 |
| 235-9054 | 2 |

Minivalves Mod. 234-000, 235-000, 244-000, 245-000



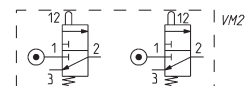
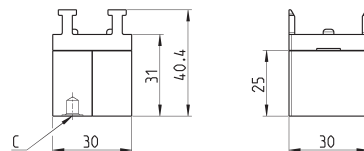
| Mod. | Operating pressure (bar) | Flow (Nl/min) | Symbols |
|---------|--------------------------|---------------|---------|
| 234-000 | 2 ÷ 8 | 60 | VM01 |
| 235-000 | 2 ÷ 8 | 60 | VM01 |
| 244-000 | 2 ÷ 8 | 60 | VM03 |
| 245-000 | 2 ÷ 8 | 60 | VM03 |



Minivalves Mod. 284-000, 285-000

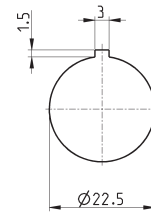


The codes shown in the table are composed by two 3/2-way valves NC which can be operated with the control device Mod. 200-870 only.



| Mod. | Operating pressure (bar) | Flow (Nl/min) | Symbols |
|---------|--------------------------|---------------|---------|
| 284-000 | 2 ÷ 8 | 60 | VM21 |
| 285-000 | 2 ÷ 8 | 60 | VM21 |

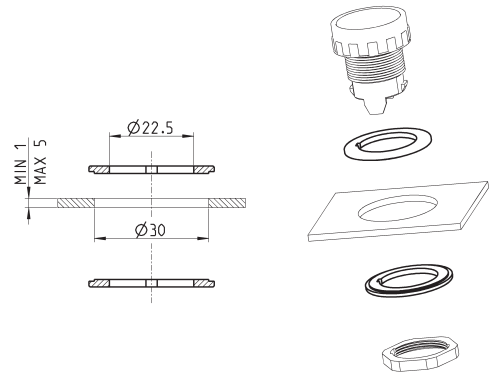
Drilling for mounting



Adaptor

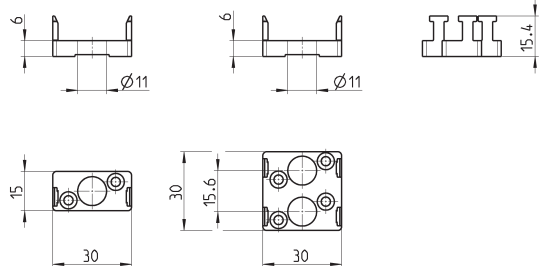


Panel hole adaptor Ø30
 Supplied with:
 2x reduction rings



Mod.
 200-2230

End cover



Mod.
 210-000
 220-000